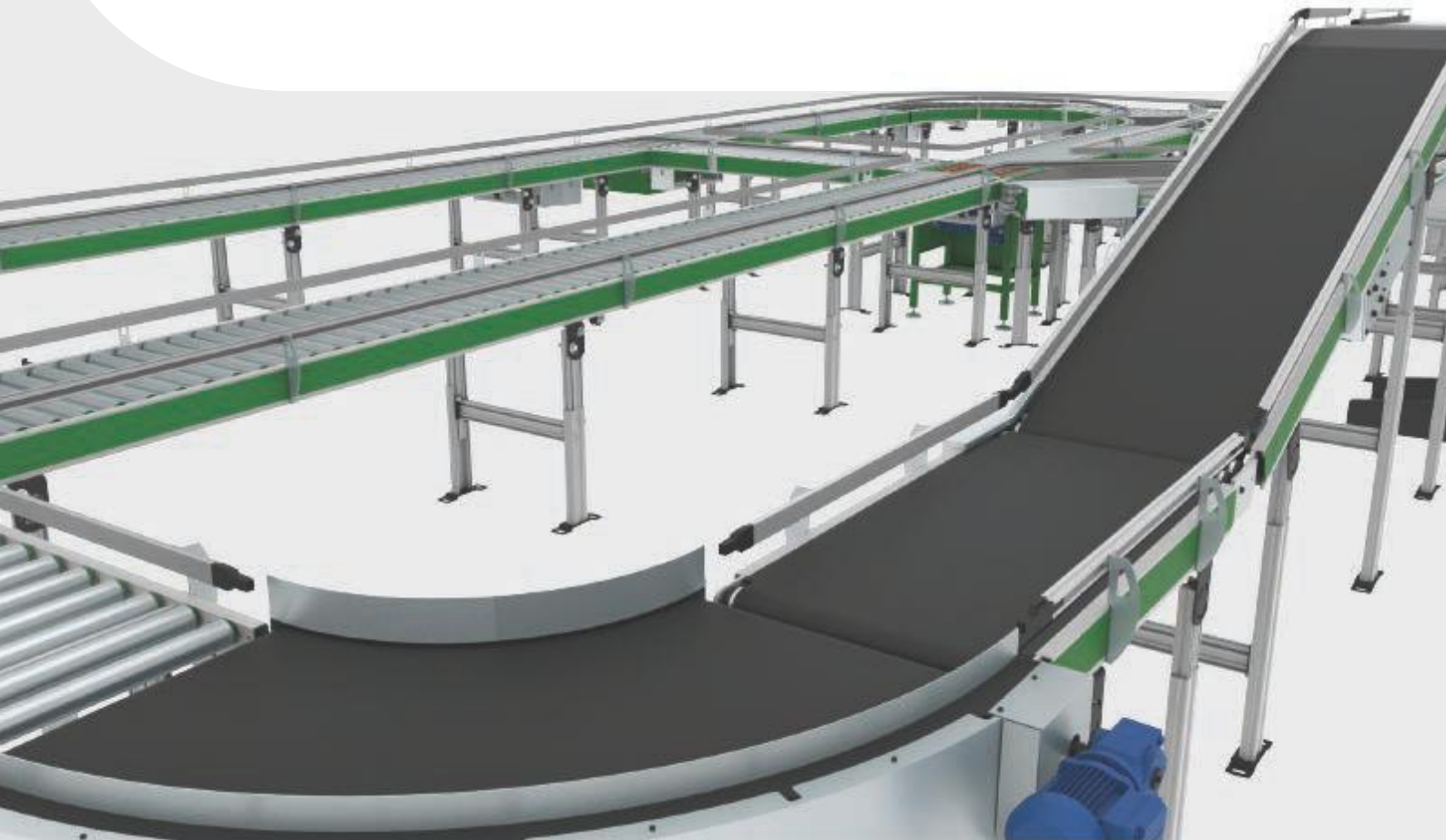


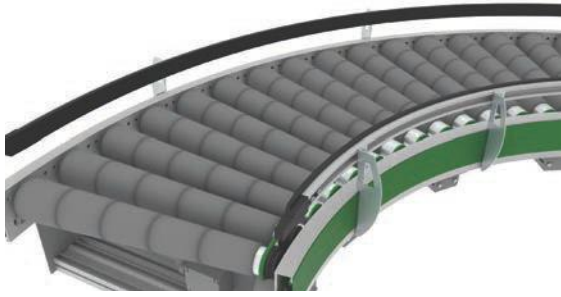
**Conveline**<sup>®</sup>  
*Inspired by Excellence*



# 3001 SERIES CONVEYOR

INTRALOGISTICS CONVEYOR SYSTEM

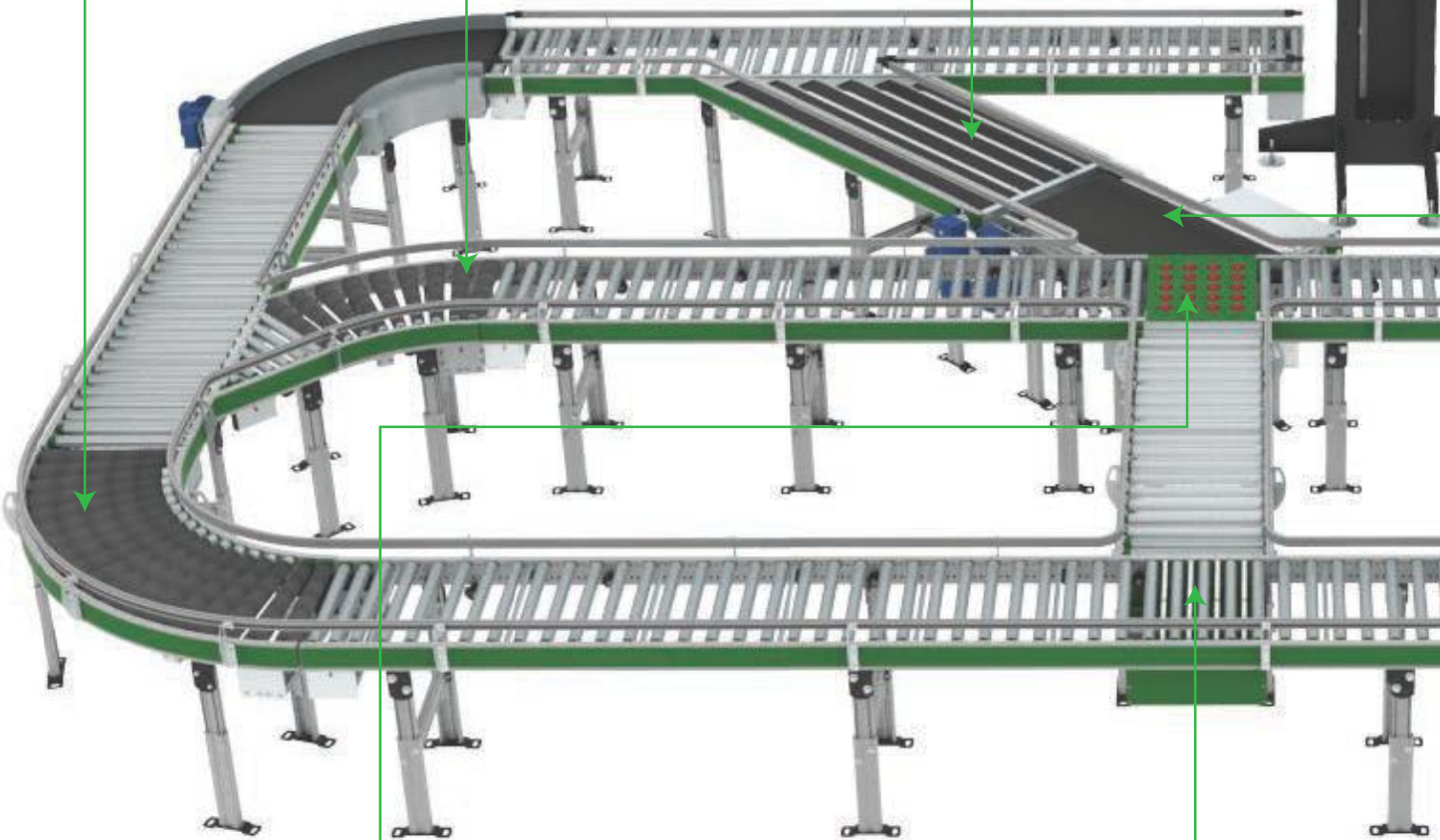
**FLEXIBILITY | MODULARITY | SCALABILITY**



45° & 90° Curve  
Roller Conveyor



45° Strip Merge  
Belt Conveyor



Wheel Sorting  
Conveyor

90° Transfer Pop Up  
Belt Conveyor



**DISCOVER THE NEW GENERATION OF CONVEYOR TECHNOLOGY...**

# ALUMINIUM MODULAR CONVEYORS

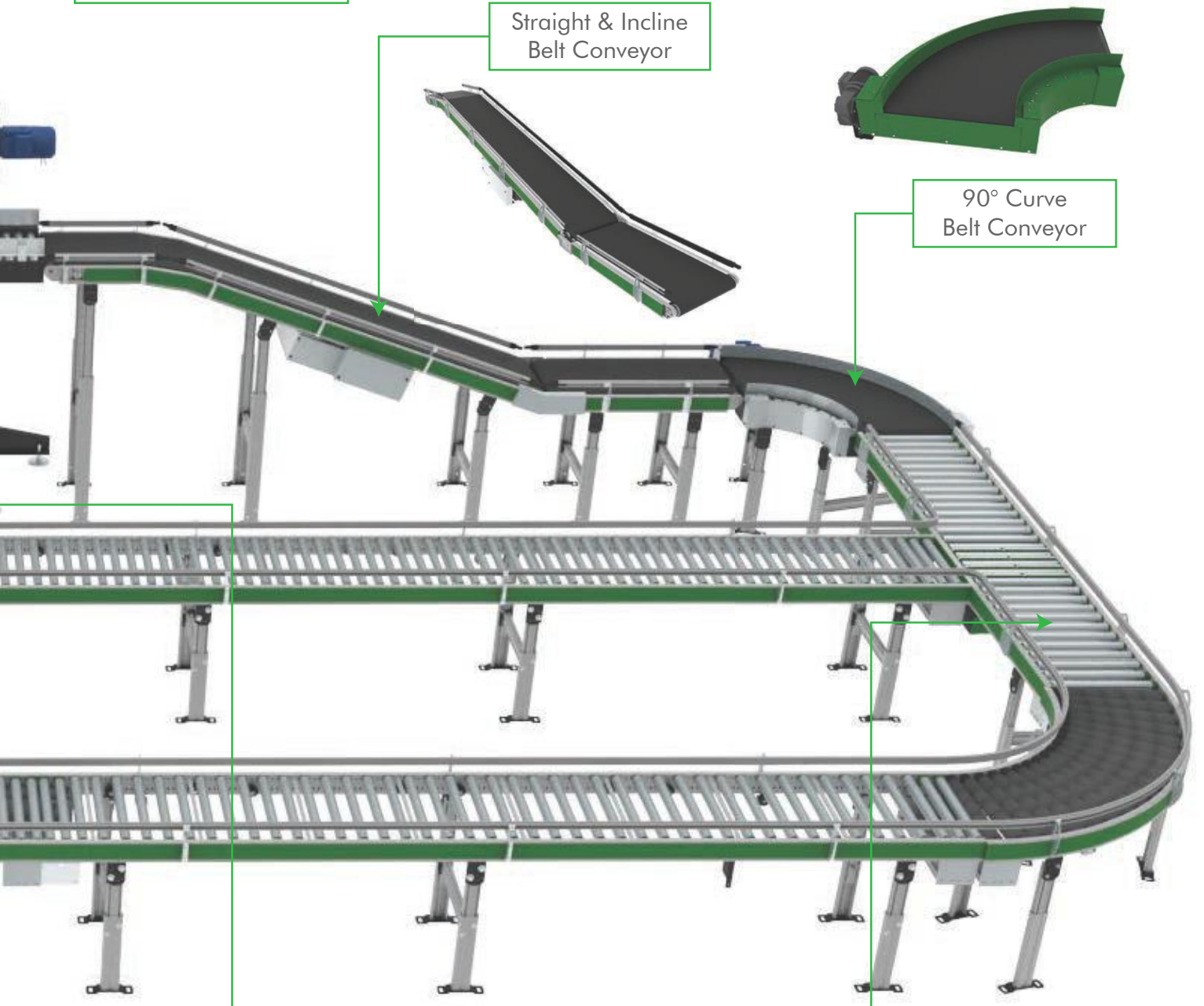
Vertical Lifter with Roller Table Conveyor

Straight & Incline Belt Conveyor

90° Curve Belt Conveyor

45° Merge & Divert Belt Conveyor

Straight Roller Powered Conveyor



## FLEXIBILITY IN SYSTEM CONFIGURATIONS

Conveline's new generation of conveyor modules offers versatility with straights, curves, merges and transfers that perfectly fit together. Depending on your requirements, we offer "smart and fast" delivery of standard modules, "layout solutions" and, in the case of application-engineered systems, "consulted projects". All these elements can be combined in a modular way so that system setup and installation consume minimal on-site setup time. On-site engineering work required for conveyor line with minimal application.

## SCALABLE, MODULAR DESIGN FOR EASY SYSTEM EXTENSIONS

When order sequences, product mix or throughput requirements suddenly changes, the modular design of the entire new conveyor platform comes into play. Our expertise in modular conveyor designing can help any system extensions or reconfigurations without major structural changes. Additional modules perfectly dovetail into the existing conveyor line, with minimal requirement of on-site engineering application.

**Configurable  
Modules**

**Scalable  
Architecture**

**Economical, Versatile &  
Cost-efficient Conveyor**

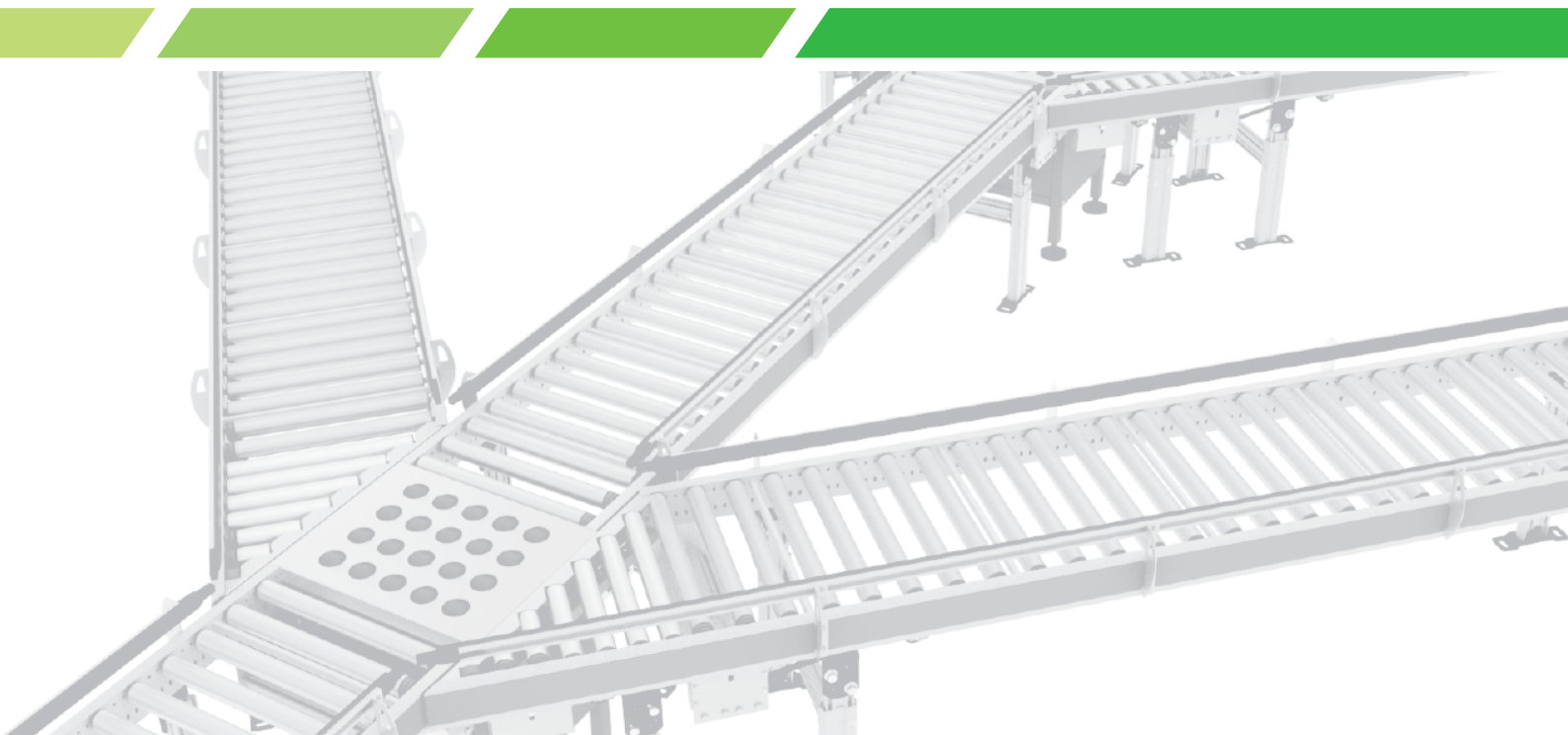
**Less Effort in Planning  
and Installation**

**Plug and Play  
Systems**

**A Complete Family  
of Modules**

## INDUSTRY 4.0

The fourth industrial revolution has already been proclaimed by experts and the "internet of things" has become a need of the time. In an interconnected, intelligent world with ever faster data connections and the availability of all relevant information in real time, companies are required to create truly smart solutions. The complexity of logistics is growing exponentially, and Modularity is the Name of the Game.



## YOUR KEY BENEFITS AT A GLANCE

### LONG-TERM GAIN ON SHORT-TERM ROI

We have designed our new conveyor platform in a way which keeps your TCO as low as possible. The use of standard components, highly efficient drive technology such as our 24VDC Roller Drive, and the lack of pneumatic actuators are some of the reasons why our systems will provide you with best-in-class payback period.

### REDUCED COMPLEXITY IN PLANNING PHASE AND FASTER PROJECT COMMISSIONING

Our pre-engineered solutions are based on high-quality components, which makes your project planning easier and safer. The modularity of our platform allows us to offer best-in-class delivery times, a key factor when overall project commissioning times are squeezed. To trigger lean project planning, conveline offers an easy-to-use CAD model, which allows our customers to virtually assemble conveline modules tailored to the specific requirements of their plant layout.

### LOWER OPERATING EXPENSES, THANKS TO HIGHLY EFFICIENT DRIVES

As 24V drive technology in intralogistics, Roller Drive is the most widely used drive for zero-pressure accumulation (ZPA) conveying. It's worth noting that, with a Roller Drive driven conveyor system, about 50 percent energy savings can be achieved compared to a centrally driven concept.

## KEY DIFFERENTIATION POINTS THAT MAKE OUR SYSTEM UNIQUE

- Highest throughput possible
- Up to 2.5 m/s (8.2 ft/s)
- Best lead times
- For standard and custom systems plus local planning support by experienced application engineers
- 24V and 400V drive options
- For energy efficiency all the way
- Flexible side guides
- Roller
- For fast and easy maintenance and top mounting
- Versatile Aluminium side profiles
- For simple and flexible installation and system extensions
- Electromechanical actuators Options for efficient and low-noise operation
- Pneumatics Standard option
- High-speed field bus
- An open platform and future-proof control system

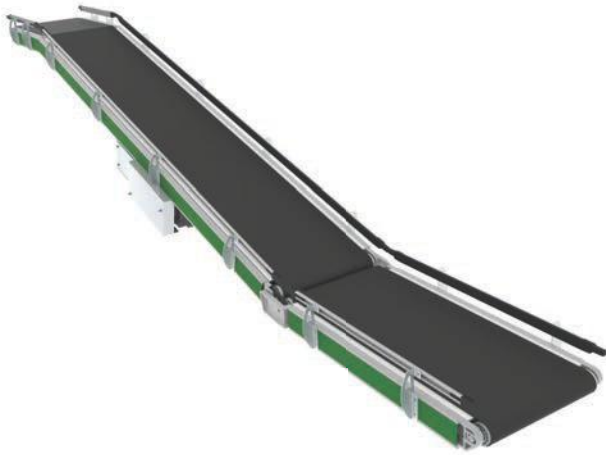
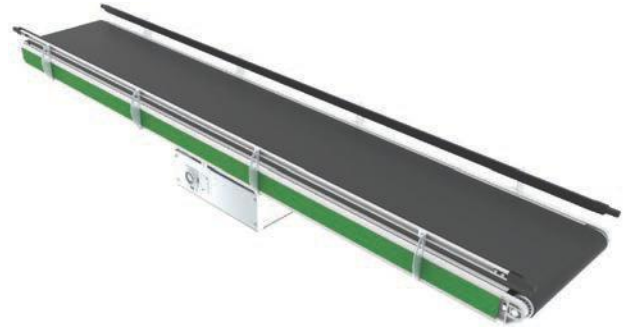


**Increase Operational Flexibility**

## BELT CONVEYORS

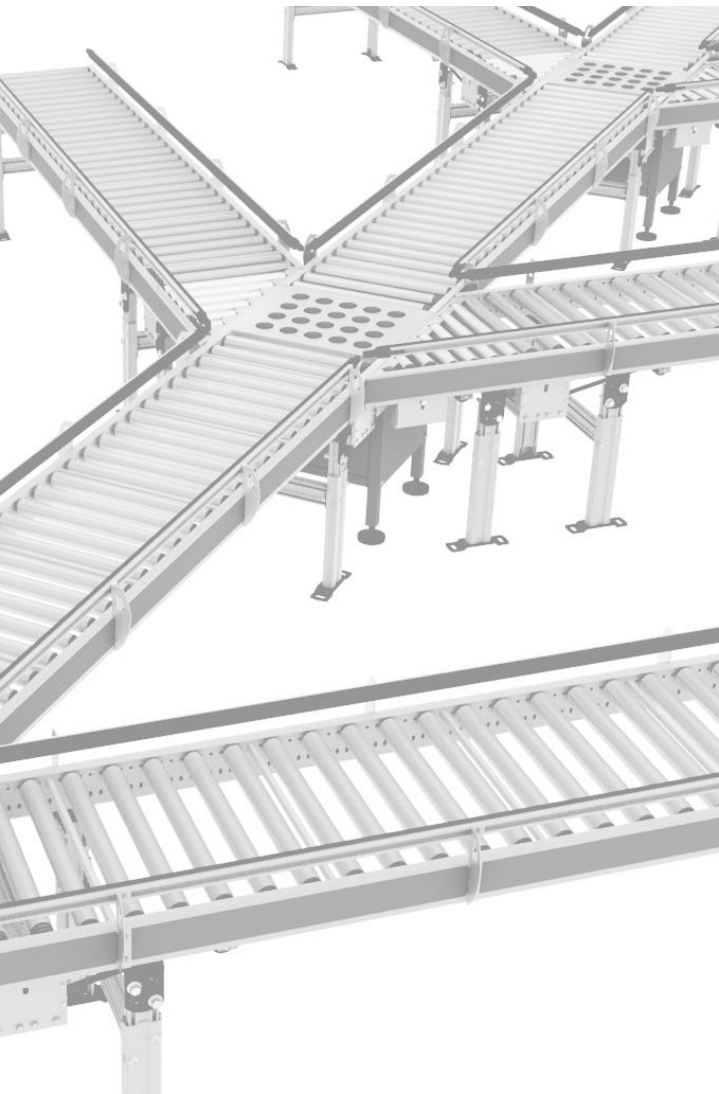
### STRAIGHTS

It is available in different models - horizontal, inclines and declines, power feeder - these belt conveyors feature with intermediate drive and direct drive. the new Conveline Belt Conveyor guarantees efficient operation for speeds of up to 150 m/m, for unit loads of 50 kg (110 lbs).



### INCLINES/DECLINES

It is available in different models inclines and declines, power feeder - these belt conveyors feature with intermediate drive. the new Conveline Belt Conveyor guarantees efficient operation for speeds of up to 150 m/m, for unit loads of 50 kg (110 lbs).



### FLEXIBLE FOR LOW AND HEAVY DUTY APPLICATIONS

The Belt conveyor is used for horizontal conveying of goods that are not suitable for roller conveyors. All kind of unit loads where straight, curve, inclines and declines need to be transferred.

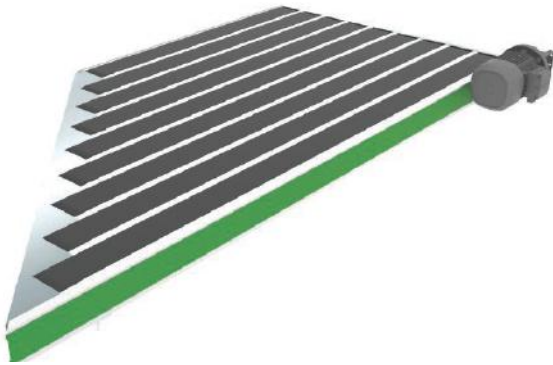
### YOUR BENEFITS AT A GLANCE

- **Reduced cycle time with Product**  
throughput levels of up to 150 m/m (8.2 ft/s) can be reached in straights, inclines and curves.
- **Easy and fast**  
replacement of belt from the top - no need to open the side profiles or dismantle support stands ensures maximum uptime in day-to-day operation.

We offer a complete systems module of conveyors ((Roller conveyors, belt conveyor, sorting, lifts, transfers, lift-up gates, etc.) and accessories (support stands, blade stops, etc.). Please visit us at [www.conveline.com](http://www.conveline.com) to know more about our solutions.

## CURVES

The Conveline Belt Curves feature a safe, direct drive concept and have been designed specifically for mixed size materials with a wide variety of units. Curve belt making them one of the quietest belt curves on the market. The Belt Curve has a belt tensioning device, a robust belt guide concept.

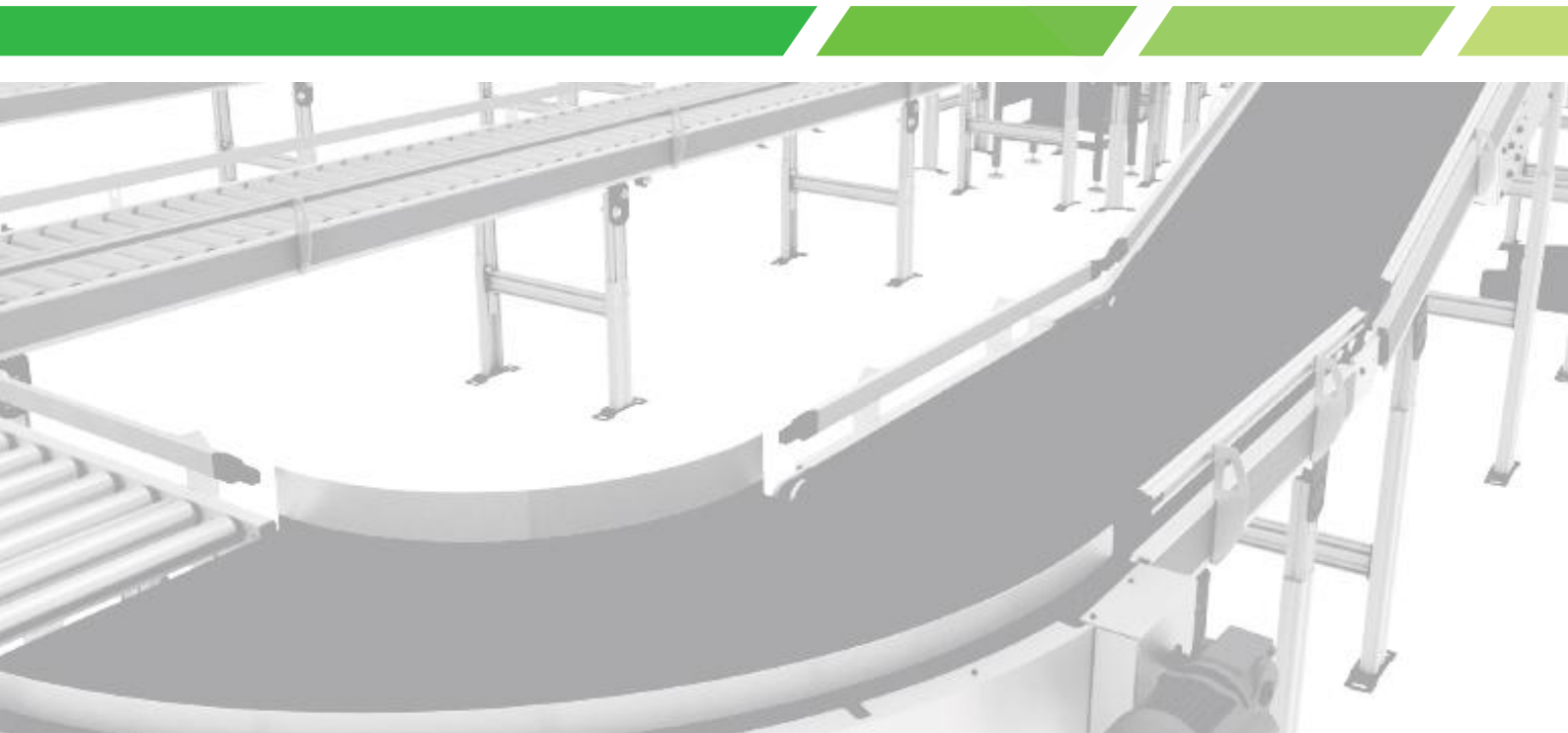


## STRIP BELT MERGES

The Conveline Strip Belt Merge is a belt conveyor with angled connecting edge of 45°. It enables the merging of two conveyor lines according to a specific angle. The conveyor belts are available in widths of 90 mm (3.5 in) Strip belt to full width belt for very small unit loads and bigger size unit loads.

## MERGE / DIVERT

The Conveline Belt Merge and Divert is a belt conveyor with angled connecting edge of 45°. It enables the merging of two conveyor lines according to a specific angle. The conveyor belts are available in widths of 90 mm (3.5 in) Strip belt to full width belt for very small unit loads and bigger size unit loads.



## 24V ROLLER CONVEYOR

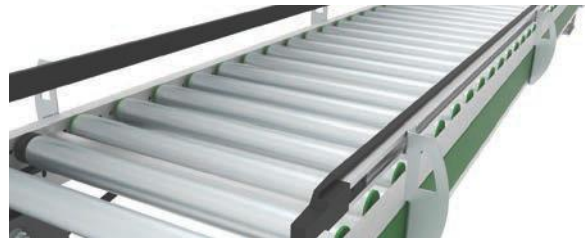
The intelligent 24V Roller Conveyor family (straights, curves and merges) offers highest energy efficiency for unit-load handling (boxes, totes, crates, etc.).

Its exemplary low-noise operation and maximum safety due to low voltage make this technology a key element for an improved working environment for your operators.

Note - Roller conveyor modules are also available as non-driven conveyors, where unit loads are moved by gravity or manually.

### STRAIGHTS

The internal control of the roller conveyor ensures transport of unit loads with zero pressure accumulation. Each zone is driven by a 24V Roller Drive and connected via Poly Vee belts with a specified number of idlers. Conveying speeds of up to 1.0 m/s (3.3 ft/s) can be reached for unit loads of 35 kg (77 lbs).



### MERGES

Conveline's 24V Merge of merges two conveyor lines together using the gaps in the flow. Alternatively, it can divert products from a straight path.

## ENERGY EFFICIENT, ACCUMULATION WITHOUT PNEUMATICS

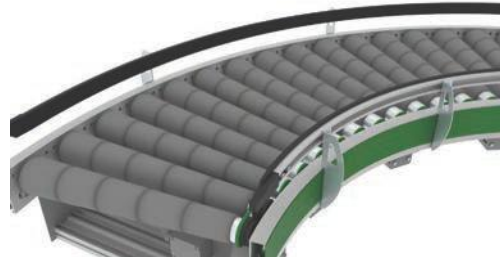
### BENEFITS

- **Up to 50 percent energy savings**  
Highest energy-efficiency rates to best-in-class 24V conveyor for ZPA operation.
- **Higher productivity and reduced operating costs**  
Instead of using pneumatics, Roller- Drives guarantee lowest operating costs and improved work environment to exemplary low-noise operation.
- **Workers' safety due to low voltage**
- **Reduced installation and maintenance time**  
Operator-friendly fast replacement of rollers with simple mounting (no special tools needed). Even the Roller Drives can be easily replaced from the top.



## CURVES

The 24V Roller Conveyor curves change the direction of transport of material. The alignment of the material is maintained within the side frames by tapered rollers. The internal control allows transportation in zero-pressure accumulation (ZPA) mode, where each zone is driven by a 24V Roller Drive and connected via round belts with a specified number of idlers. Conveying speeds of up to 1.0 m/s (3.3 ft/s) can be reached for unit loads of 35 kg (77 lbs).

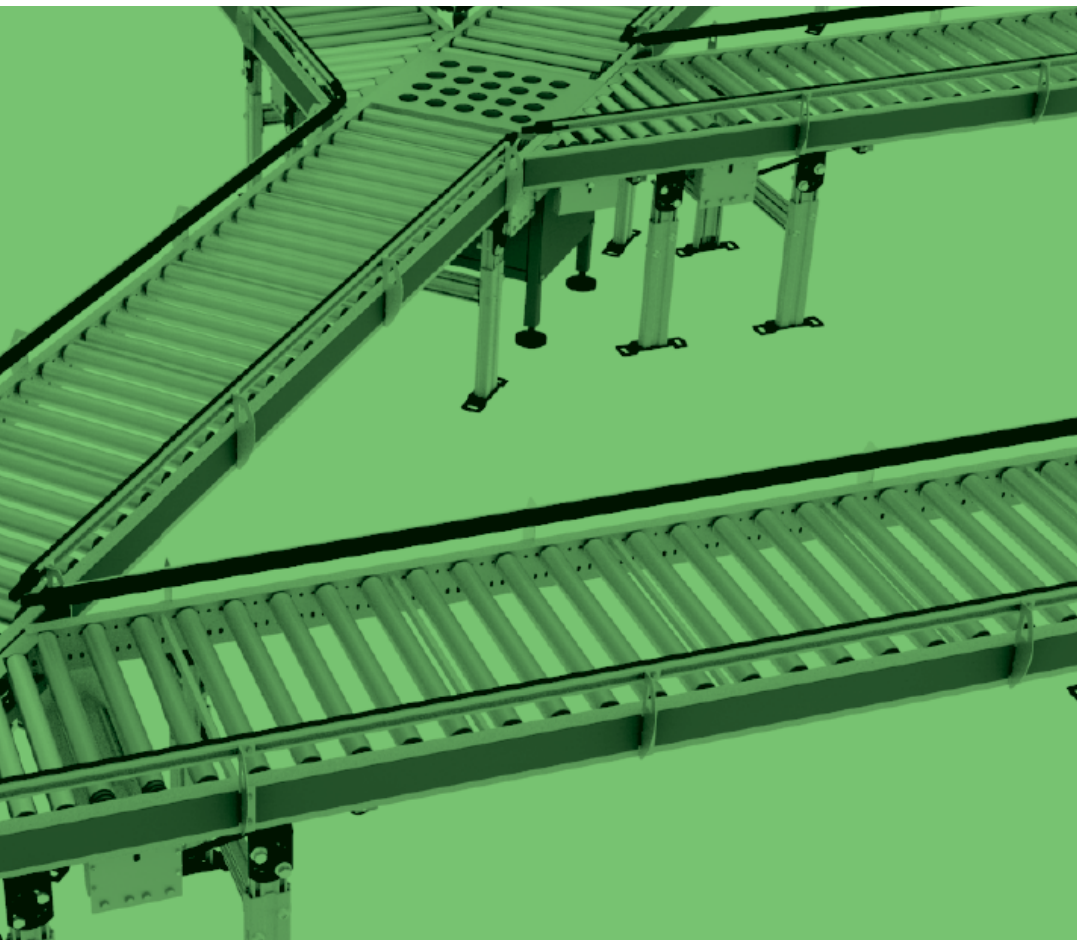


## HIGH-PERFORMANCE DIVERT

The new High-Performance Divert is used for Transfer of unit loads preferably having a smooth surface at different angles, to the right or the left in a lateral conveyor line.

## 24V Transfer Unit

The 24V Transfer sorting operations (i.e., Transfer from a roller conveyor at an angle of 90°). Direction and orientation of the flow of goods are changed. Toothed belts are raised by conveline roller drives and the transfer unit itself can be mounting at any position of the conveyor line and subsequently easily repositioned.



We offer a complete systems module of conveyors ((Roller conveyors, belt conveyor, sorting, lifts, transfers, lift-up gates, etc.) and accessories (support stands, blade stops, etc.). Please visit us at [www.conveline.com](http://www.conveline.com) to know more about our solutions.

## 400V ROLLER CONVEYOR

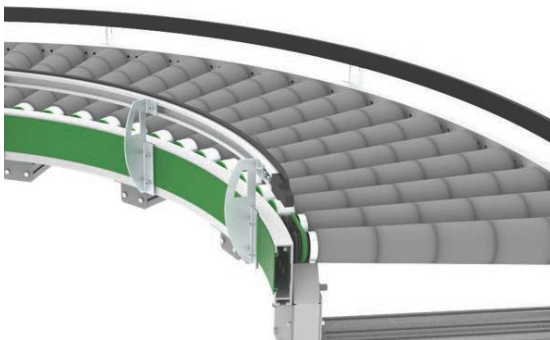
### HIGH PERFORMANCE IN TRANSPORT

The 400V Roller Conveyor is driven by a flat or V belt and delivers highest performance in transportation. Compared to the 24V version, this conveyor is ideal where higher throughput levels are required and/or heavier unit loads are to be conveyed. Its modular design allows easy integration of key elements such as transfers and diverts with the possibility of sorting operations on the fly, (i.e., without stopping the product in the material flow). Straight, curve and divert/merge modules can be combined or used as stand-alone elements.

Note that all Conveline roller conveyor modules are also available as non-driven conveyors, where unit loads are moved by gravity or manually.

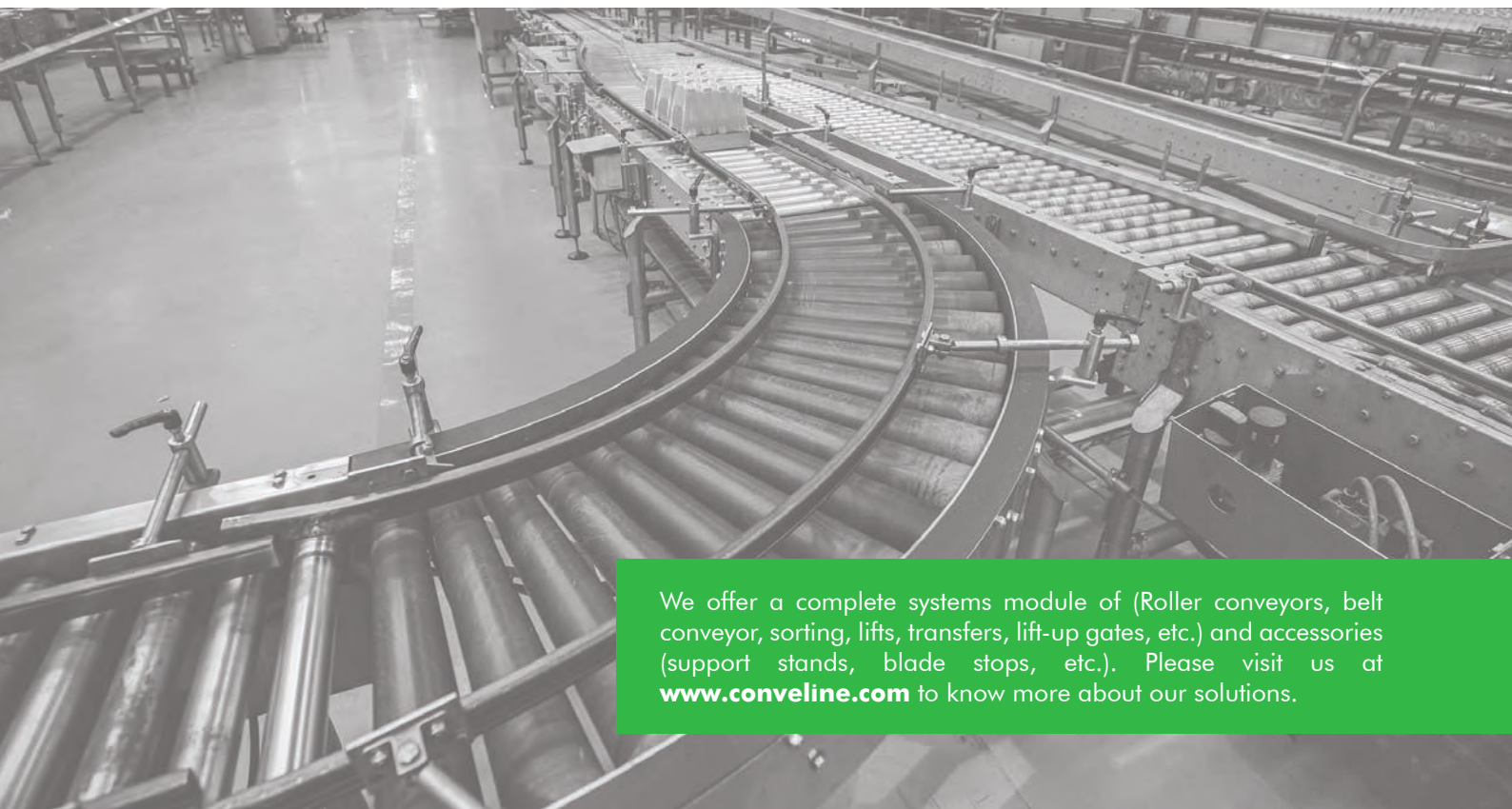
### STRAIGHTS

The permanently driven flat or V belt conveyor is used as a transport conveyor, which requires only one 400V drive for long distances up to 20 m (66 ft). On straight conveyor lines, speeds of up to 120 m/m (6.6 ft/s) for unit loads of 50 kg (110 lbs) can be reached in transportation mode. With the use of pneumatic actuators, the conveyor can alternatively be completely or partially operated as a ZPA conveyor



### CURVES

The 400V Roller Conveyor curves change the direction of transport of material. Alignment of the material is maintained within the side frames by tapered rollers, driven by a V belt. Curve elements of flat belt roller conveyors are always driven by the adjacent straight module.



We offer a complete systems module of (Roller conveyors, belt conveyor, sorting, lifts, transfers, lift-up gates, etc.) and accessories (support stands, blade stops, etc.). Please visit us at [www.conveline.com](http://www.conveline.com) to know more about our solutions.

## HIGH-PERFORMANCE DIVERT

The new High-Performance Diverter is used for Transfer of unit loads preferably having a smooth surface at different angles, to the right or the left in a lateral conveyor line.

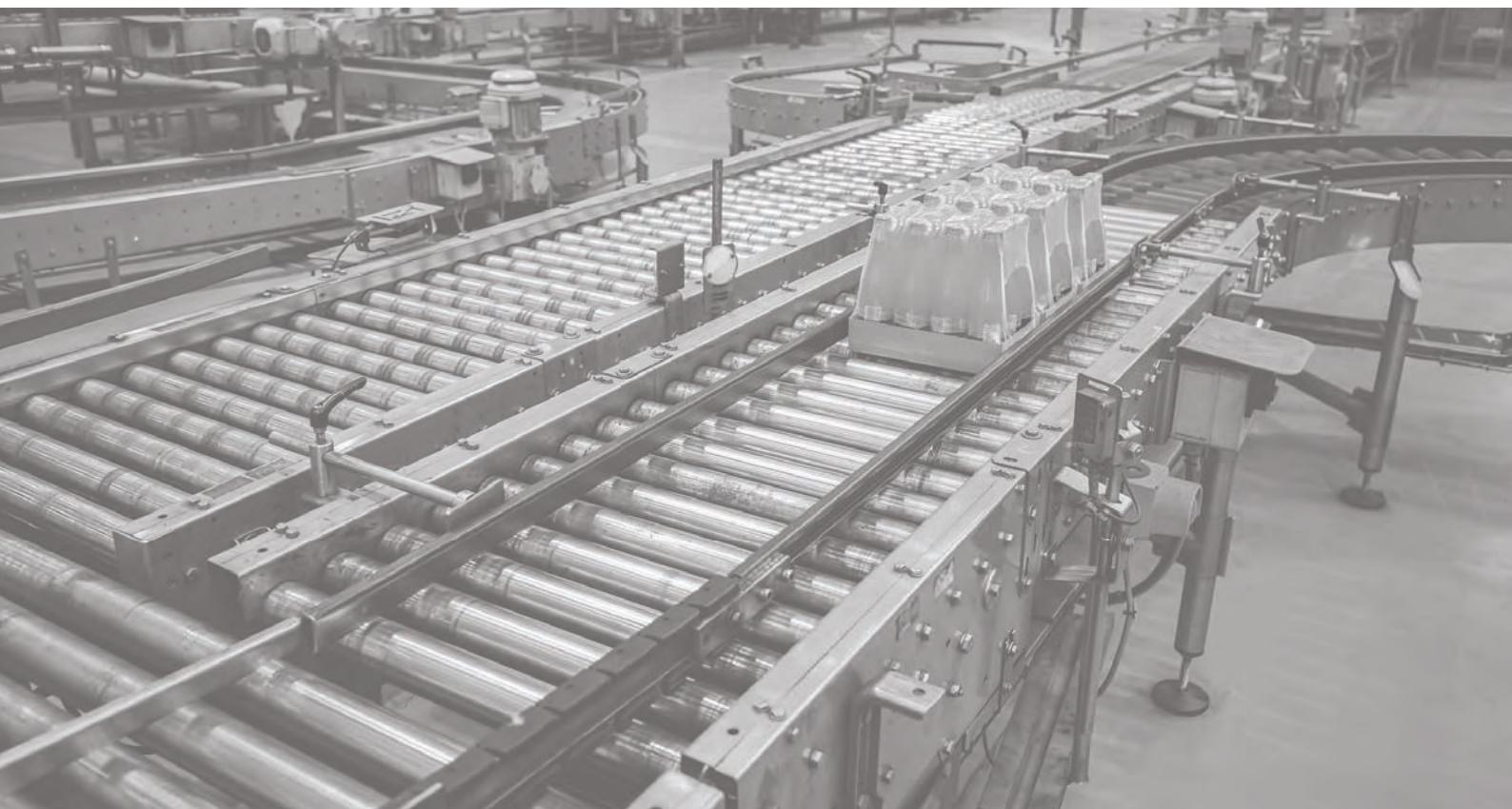


## MERGES

Conveline 400V Merge is used to connect the side roller modules at an angle (45°) to a main line. This can be used for discharging or in feeding unit loads.

## 400V Transfer Unit

The 400V Transfer sorting operations (i.e., Transfer from a roller conveyor at an angle of 90°). Direction and orientation of the flow of goods are changed. Toothed belts are raised by conveline roller drives and the transfer unit itself can be mounting at any position of the conveyor line and subsequently easily repositioned.





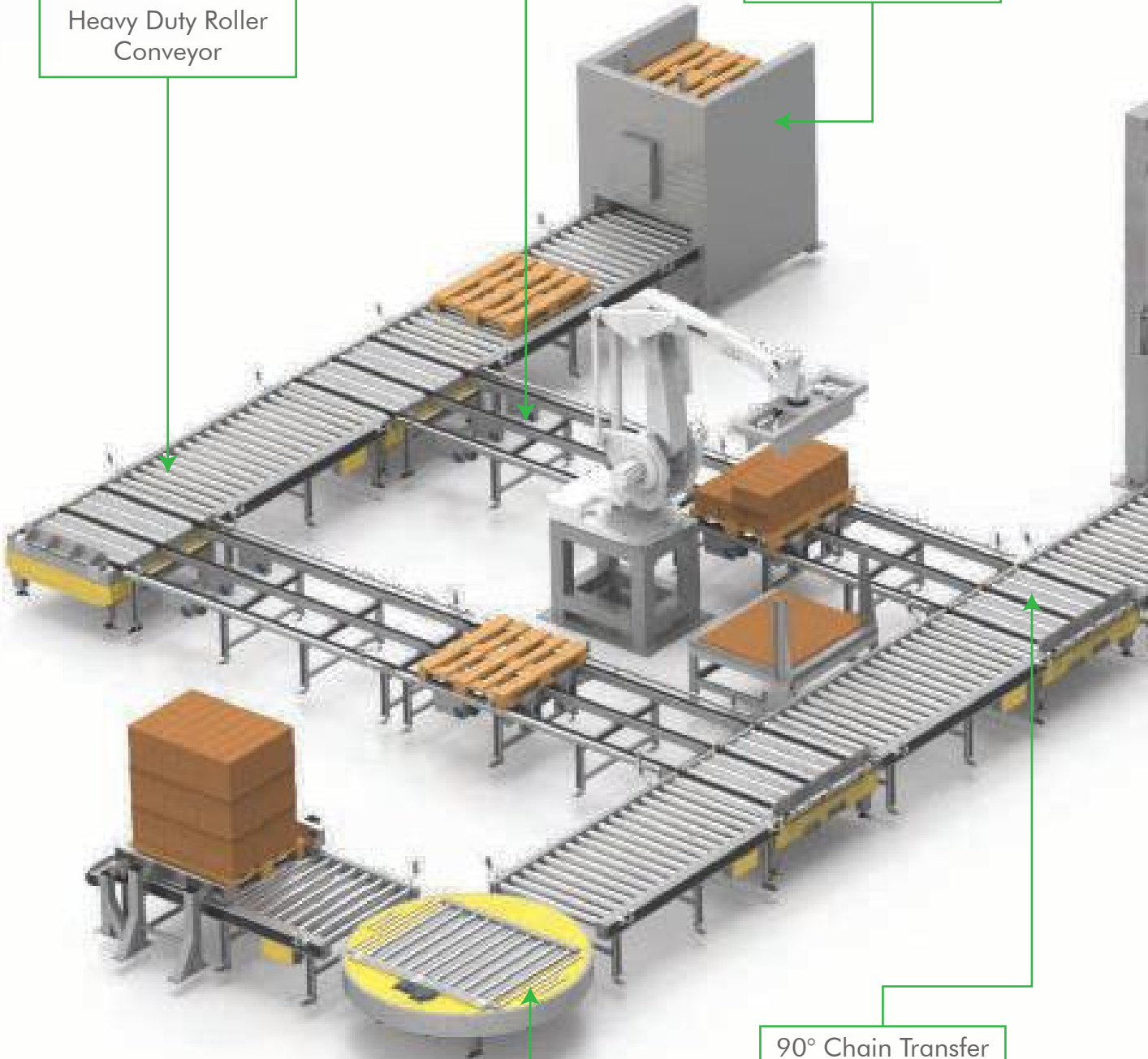
Heavy Duty Roller Conveyor



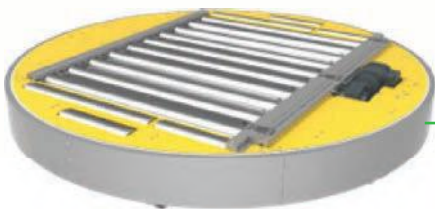
2&3 Strand Chain Conveyor



Pneumatic Pallet Dispenser



90° Chain Transfer Roller Conveyor



180° Turn Table Conveyor with Cover



# 9001 Series

## Pallet Handling Conveyors

### Maximum Pallet Loads

#### Roller Pitch

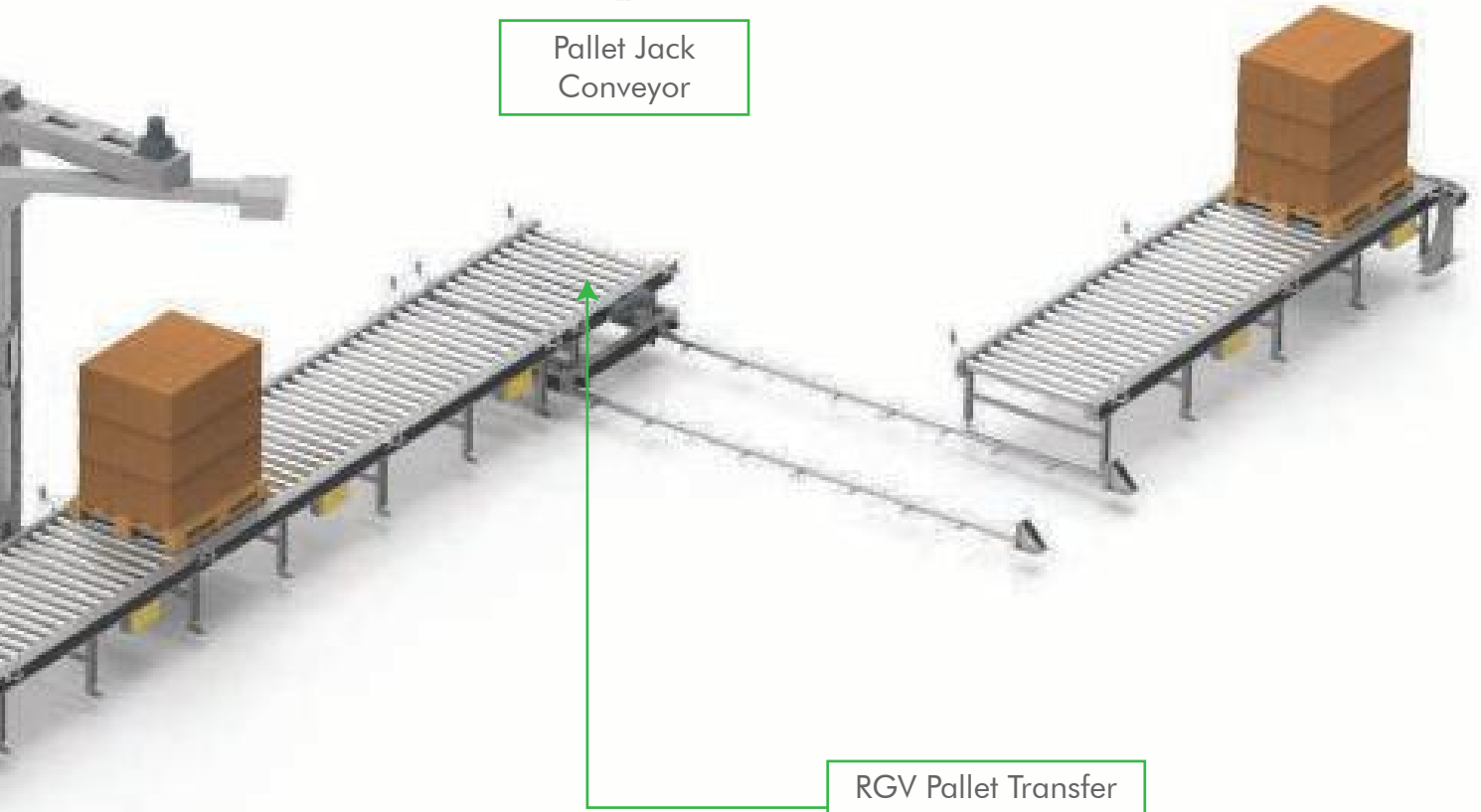
150mm, 175mm, 200mm

#### Load Kg.

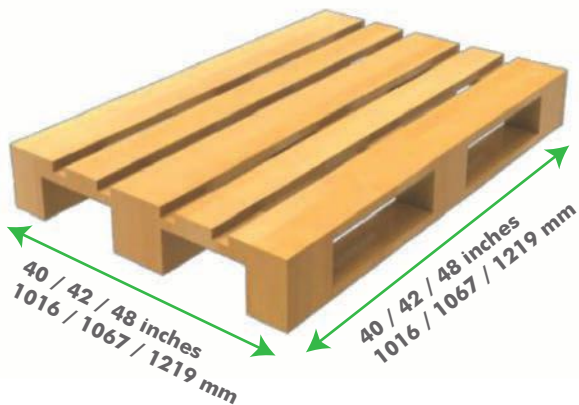
1500kg, 1200kg, 900kg



Pallet Jack  
Conveyor



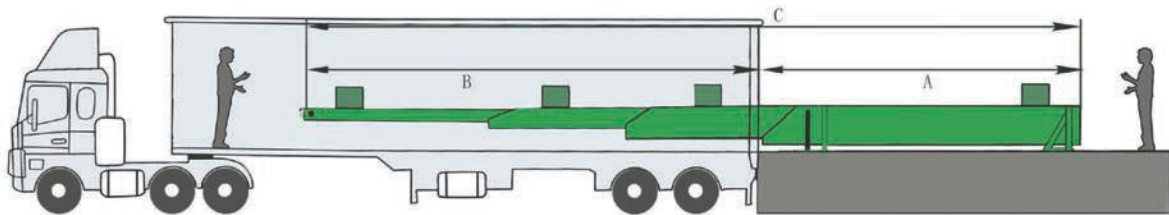
RGV Pallet Transfer  
Conveyor



# TELESCOPIC CONVEYOR SYSTEMS



Save time—unload & load parcels, polybags & even tyres swiftly and ergonomically using Telescopic Conveyors



## FLEXIBLE CONVEYOR



**FLEXIBLE GRAVITY ROLLER CONVEYOR**



**FLEXIBLE GRAVITY WHEEL CONVEYOR**



**FLEXIBLE MOTORIZED ROLLER CONVEYOR**

- Vehicle Loading and Unloading
- Parcel Distribution Centres
- All cross-docking applications
- Machine to Machine Interlinking
- Easily Moved IN/OUT of trucks
- Fast, Safe and Less Manpower work
- Cost effective & modular options
- Less Idle Time for Loading/Unloading

### Easy Loading/Unloading

Filling trailers/trucks/containers with parcels, polybags, tyres and packages has never been easier. The newest addition to the Performer Telescopic Conveyor family, handles this process efficiently.

You can easily meet tight delivery windows, without extra manpower.

We offer a complete systems module of (Roller conveyors, belt conveyor, sorting, lifts, transfers, lift-up gates, etc.) and accessories (support stands, blade stops, etc.). Please visit us at [www.conveline.com](http://www.conveline.com) to know more about our solutions.

## ROLLERS & ACCESSORIES

We are not only the conveyor manufacturer but also the largest roller manufacturer in India. We source and purchase only the best raw materials directly from the mills and in large quantities.

Our range of rollers includes Gravity rollers, Plastic Rollers, Stainless Steel Rollers, Grooved Rollers, Tapered Rollers, Sprocket Rollers, Belt Conveyor Rollers, as well as an extensive range of specialized rollers.

Optimize Your Operating Efficiency with our Rollers and parts services.

We are a reputed firm for supplying high quality competitively priced rollers and spares to all aspects of the material handling industry. Our product are used by Fortune 500 companies in India and across the world.

We have a high range of standardization in our systems which means we can guarantee a particularly rapid and reliable spare parts service to meet the end users needs with speed and ease.

- **Competitive prices**
- **Fast turn around**
- **Extensive product range**
- **Excellent customer service**

### SPARES

We also produce an extensive range of components, competitively priced, for powered Roller Conveyors, Pallet Conveyors, Gravity Conveyors and Belt Conveyors, with all plastic conveyor components injection moulded at our manufacturing facility.



*Inspired by Excellence*



**CONVELINE SYSTEMS PRIVATE LIMITED**

Block No 472, B/h Unick Fix A Form  
Tajpur Road, Ahmedabad – 382213  
Gujarat – India.

☎ +91 908 1915 912  
✉ [info@conveline.com](mailto:info@conveline.com), [sales@conveline.com](mailto:sales@conveline.com)  
🌐 [www.conveline.com](http://www.conveline.com), [www.convelinerollers.com](http://www.convelinerollers.com)

**Need Something Different?**

Conveline sales team will provide you complete solution for your specific custom application.